

---

# ENVIRONMENTAL

---

**IN THIS ISSUE**

.....

NEW RESPONSIBLE  
AUTHORITIES IDENTIFIED TO  
REGULATE WATER USE

.....

## NEW RESPONSIBLE AUTHORITIES IDENTIFIED TO REGULATE WATER USE

The then-Minister of Water and Environmental Affairs on 23 May 2014 established three new Catchment Management Agencies (CMA) under the National Water Act, No. 36 of 1998 (NWA). CMAs are responsible for the management of water resources within the defined catchment areas. The establishment of CMAs has the purpose of delegating water resource management to the regional or catchment level and to involve local communities within water management.

The three new CMAs are:

- the Limpopo-North West CMA, located in the North West and Limpopo Provinces;
- the Pongola-Umzimkulu CMA, located in KwaZulu-Natal; and
- the Breede-Gouritz CMA, located in the Western Cape. (The Breede-Gouritz CMA replaces the Breede-Overberg CMA.)

Each CMA, which is mandated to manage water resources in its catchment area, is required to develop a Catchment Management Strategy that will be the guiding document on how the usage of water will be regulated within that specific catchment area.

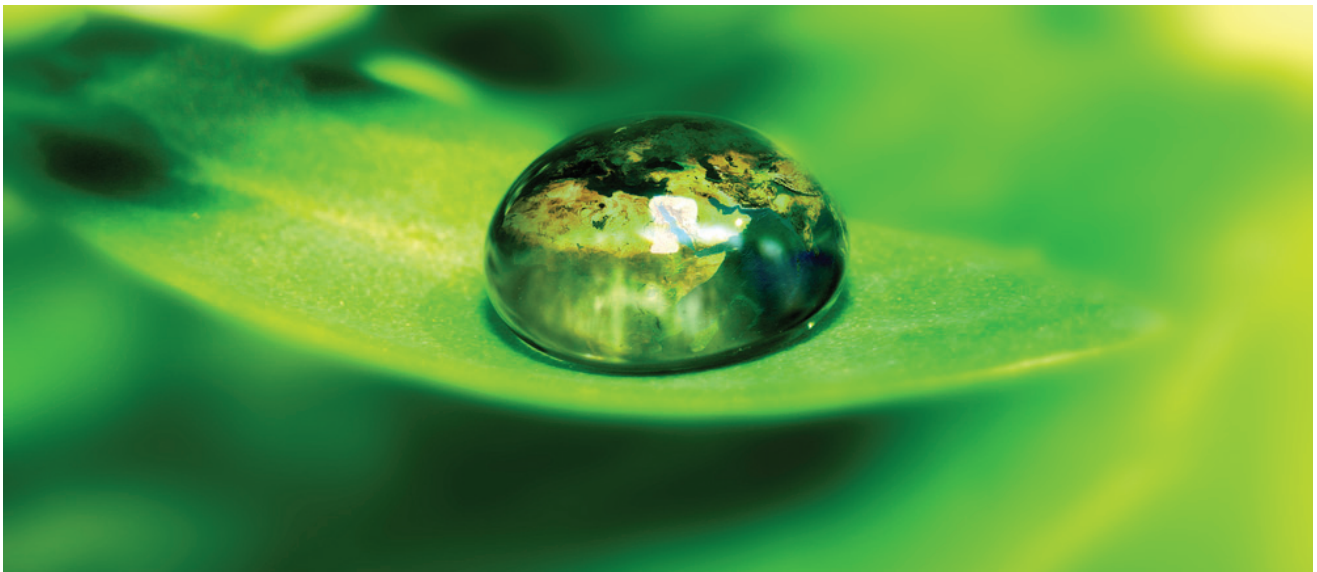


The CMAs serve as the first port of call in matters concerned with the management of water resources in their areas. Presently the powers are limited to the 'initial functions' provided for in the NWA. These include coordination of the related activities of water users within the water management area, investigation of the protection, use, conservation and management of water resources and the promotion of community participation in water resource management.

The CMAs may be delegated additional powers by the Minister of Water and Sanitation Affairs contained in Schedule 3 of the NWA, which include powers to manage, monitor, conserve and protect water resources and to make rules to regulate water use.

On the same date, the then-Minister of Water and Environmental Affairs proposed the establishment of the Olifants CMA. This proposal is available for inspection.

*Helen Dagut and Ernst Müller*



**2013**  
 1st in M&A Deal Flow,  
 1st in M&A Deal Value,  
 1st in Unlisted Deals - Deal Flow.

---

**2012**  
 1st in M&A Deal Flow,  
 1st in General Corporate Finance Deal Flow,  
 1st in General Corporate Finance Deal Value,  
 1st in Unlisted Deals - Deal Flow.

---

**2011**  
 1st in M&A Deal Flow,  
 1st in M&A Deal Value,  
 1st in General Corporate Finance Deal Flow,  
 Legal Advisor - Deal of the Year.

**DealMakers**

**HIGHEST RANKING OF CLIENT SATISFACTION AMONGST AFRICAN FIRMS 2013**

**Legal Week**

**VOTED NO.1 LAW FIRM FOR CLIENT SERVICE EXCELLENCE FOUR YEARS IN A ROW**

**pmr**  
 africa

## CONTACT US

For more information about our Environmental practice and services, please contact:



**Terry Winstanley**  
National Practice Head  
Director  
**T** +27 (0)21 481 6332  
**E** terry.winstanley@dlacdh.com



**Helen Dagut**  
Director  
**T** +27 (0)21 481 6334  
**E** helen.dagut@dlacdh.com



**Tracy-Lee Erasmus**  
Senior Associate  
**T** +27 (0)11 562 1590  
**E** tracy-lee.erasmus@dlacdh.com



**Sandra Gore**  
Director  
**T** +27 (0)11 562 1433  
**E** sandra.gore@dlacdh.com

This information is published for general information purposes and is not intended to constitute legal advice. Specialist legal advice should always be sought in relation to any particular situation. Cliffe Dekker Hofmeyr will accept no responsibility for any actions taken or not taken on the basis of this publication.

### BBBEE STATUS: LEVEL THREE CONTRIBUTOR

#### JOHANNESBURG

1 Protea Place Sandton Johannesburg 2196, Private Bag X40 Benmore 2010 South Africa  
Dx 154 Randburg and Dx 42 Johannesburg  
**T** +27 (0)11 562 1000 **F** +27 (0)11 562 1111 **E** jhb@dlacdh.com

#### CAPE TOWN

11 Buitengracht Street Cape Town 8001, PO Box 695 Cape Town 8000 South Africa  
Dx 5 Cape Town  
**T** +27 (0)21 481 6300 **F** +27 (0)21 481 6388 **E** ctn@dlacdh.com