

29 JUNE 2020

EMPLOYMENT ALERT

IN THIS ISSUE >

Are you prepared for a positive COVID-19 case in the workplace?

With the number of active cases on the rise and more workplaces re-opening, it is inevitable that a worker may present with symptoms related to COVID-19. It is imperative that employers are prepared for such an event and that employers act decisively to limit the risk of transmission in the workplace.

FOR MORE INSIGHT INTO OUR
EXPERTISE AND SERVICES

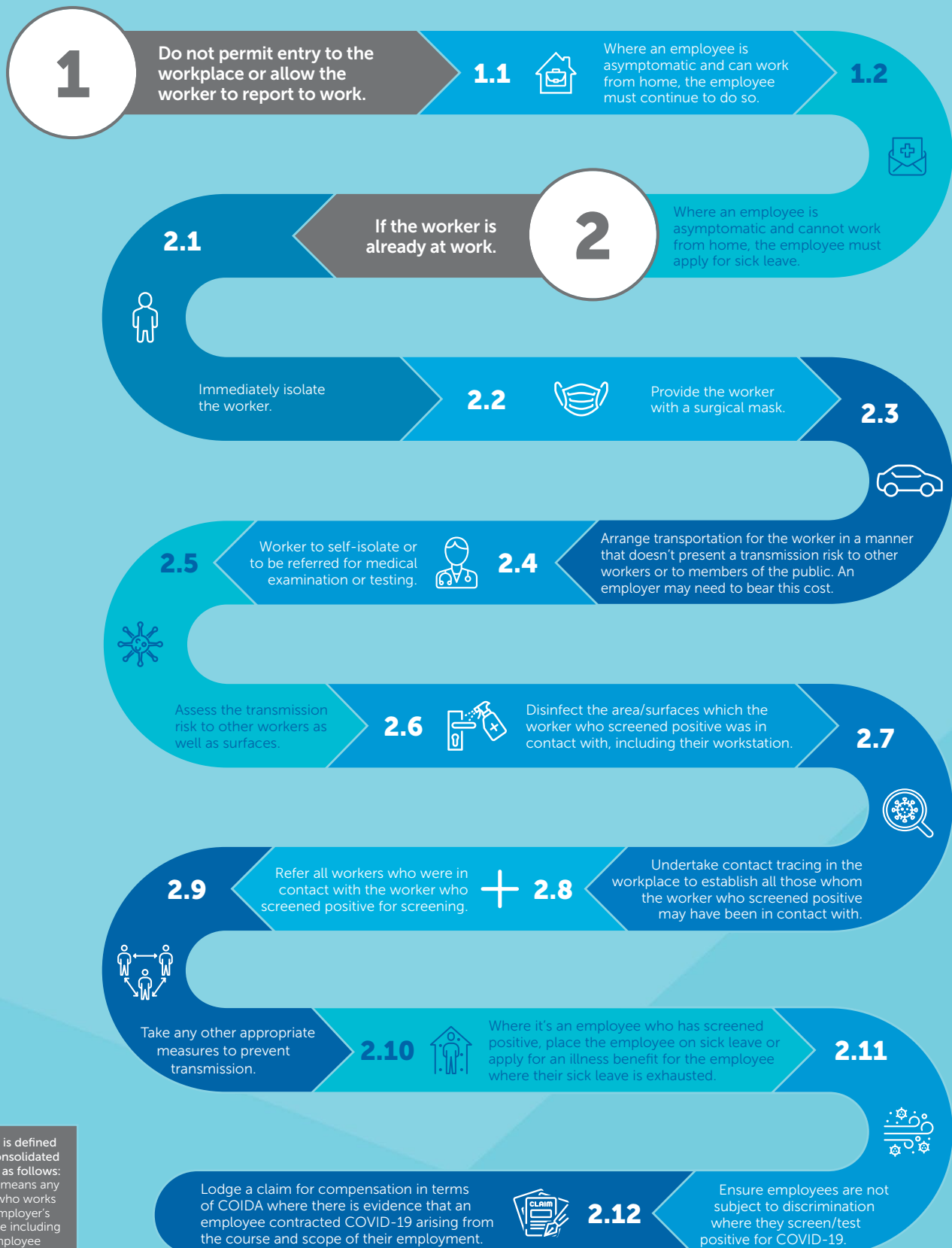
CLICK HERE 



CLIFFE DEKKER HOFMEYR

Are you prepared for a positive COVID-19 case in the workplace?

Paragraph 27 of the Consolidated COVID-19 Direction on Health and Safety in the Workplace published on 4 June 2020 details the steps an employer must take where a worker presents with symptoms related to COVID-19.



*Worker is defined in the Consolidated Directive as follows: "worker" means any person who works in an employer's workplace including an employee or contractor, a self-employed person or volunteer.



COVID-19 WORKPLACE HEALTH AND SAFETY ONLINE COMPLIANCE TRAINING

Information. Education. Training.

We have developed a bespoke eLearning product for use on your learning management system, that will help you strengthen your workplace health and safety measures and achieve your statutory obligations in the face of the COVID-19 pandemic.

To purchase or for more information contact OHSonlinetool@cdhlegal.com.

EMPLOYMENT

CASE LAW UPDATE 2019



CLICK HERE
to access CDH's Employment Law booklet to assist you in navigating the employment relationship during the current economic uncertainty.

CHAMBERS GLOBAL 2014 - 2020 ranked our Employment practice in Band 2: Employment.

Aadil Patel ranked by CHAMBERS GLOBAL 2015 - 2020 in Band 2: Employment.

Fiona Leppan ranked by CHAMBERS GLOBAL 2018 - 2020 in Band 2: Employment.

Gillian Lumb ranked by CHAMBERS GLOBAL 2020 in Band 3: Employment.

Hugo Pienaar ranked by CHAMBERS GLOBAL 2014 - 2020 in Band 2: Employment.

Michael Yeates ranked by CHAMBERS GLOBAL 2020 as an up and coming employment lawyer.



Our Employment practice is ranked as a Top-Tier firm in THE LEGAL 500 EMEA 2020.

Fiona Leppan is ranked as a Leading Individual in Employment in THE LEGAL 500 EMEA 2020.

Aadil Patel is recommended in Employment in THE LEGAL 500 EMEA 2020.

Gillian Lumb is recommended in Employment in THE LEGAL 500 EMEA 2020.

Hugo Pienaar is recommended in Employment in THE LEGAL 500 EMEA 2020.

Michael Yeates is recommended in Employment in THE LEGAL 500 EMEA 2020.

Jose Jorge is recommended in Employment in THE LEGAL 500 EMEA 2020.



OUR TEAM

For more information about our Employment practice and services, please contact:



Aadil Patel
National Practice Head
Director
T +27 (0)11 562 1107
E aadil.patel@cdhlegal.com



Jose Jorge
Director
T +27 (0)21 481 6319
E jose.jorge@cdhlegal.com



Fiona Leppan
Director
T +27 (0)11 562 1152
E fiona.leppan@cdhlegal.com



Gillian Lumb
Director
T +27 (0)21 481 6315
E gillian.lumb@cdhlegal.com



Hugo Pienaar
Director
T +27 (0)11 562 1350
E hugo.pienaar@cdhlegal.com



Thabang Rapuleng
Director
T +27 (0)11 562 1759
E thabang.rapuleng@cdhlegal.com



Michael Yeates
Director
T +27 (0)11 562 1184
E michael.yeates@cdhlegal.com



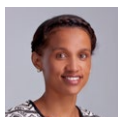
Mohsina Chenia
Executive Consultant
T +27 (0)11 562 1299
E mohsina.chenia@cdhlegal.com



Faan Coetzee
Executive Consultant
T +27 (0)11 562 1600
E faan.coetzee@cdhlegal.com



Avinash Govindjee
Consultant
M +27 (0)83 326 5007
E avinash.govindjee@cdhlegal.com



Riola Kok
Consultant
T +27 (0)11 562 1748
E riola.kok@cdhlegal.com



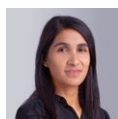
Anli Bezuidenhout
Senior Associate
T +27 (0)21 481 6351
E anli.bezuidenhout@cdhlegal.com



Sean Jamieson
Senior Associate
T +27 (0)11 562 1296
E sean.jamieson@cdhlegal.com



Bheki Nhlapho
Senior Associate
T +27 (0)11 562 1568
E bheki.nhlapho@cdhlegal.com



Asma Cachalia
Associate
T +27 (0)11 562 1333
E asma.cachalia@cdhlegal.com



Tamsanqa Mila
Associate
T +27 (0)11 562 1108
E tamsanqa.mila@cdhlegal.com

BBBEE STATUS: LEVEL TWO CONTRIBUTOR

Our BBBEE verification is one of several components of our transformation strategy and we continue to seek ways of improving it in a meaningful manner.

PLEASE NOTE

This information is published for general information purposes and is not intended to constitute legal advice. Specialist legal advice should always be sought in relation to any particular situation. Cliffe Dekker Hofmeyr will accept no responsibility for any actions taken or not taken on the basis of this publication.

JOHANNESBURG

1 Protea Place, Sandton, Johannesburg, 2196. Private Bag X40, Benmore, 2010, South Africa. Dx 154 Randburg and Dx 42 Johannesburg.
T +27 (0)11 562 1000 F +27 (0)11 562 1111 E jhb@cdhlegal.com

CAPE TOWN

11 Buitengracht Street, Cape Town, 8001. PO Box 695, Cape Town, 8000, South Africa. Dx 5 Cape Town.
T +27 (0)21 481 6300 F +27 (0)21 481 6388 E ctn@cdhlegal.com

STELLENBOSCH

14 Louw Street, Stellenbosch Central, Stellenbosch, 7600.
T +27 (0)21 481 6400 E cdh Stellenbosch@cdhlegal.com

©2020 9101/JUNE

